

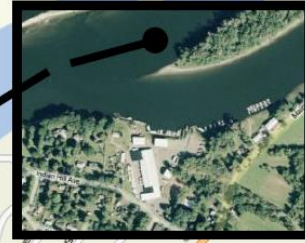
# THE CONNECTICUT RIVER



## RAFT RACE



# START



All Participants Must Wear  
**Personal Floatation Device**  
During The Raft Race

## RAFT RACE -- FLOAT PLAN

- The racecourse starts in the sheltered waters, out of the main channel, on the Western side of Gildersleeve Island by the Southern end, or downriver tip, of the island. Directly across from the start is Petzold's Marina.
- The anticipated race duration is from approx. 10:00 a.m. – 2:00 p.m. Saturday, July 30, 2016. There may be a slight delay if rafts are still coming up the river after 10:00 a.m.
- Once all participants are positioned and ready to go the National Anthem will be played and the start cannon fired.
- Staggered start: 1<sup>st</sup> cannon blast is for Cruising & Horrendous Class Rafts, Canoes, and Kayaks. The 2<sup>nd</sup> cannon blast is for America Class Rafts.
- All entries will be required to accept a tow if found to be floundering mid-race and/or have not finished by 2:00 p.m.
- **In any life threatening emergency situation immediately Dial 911 and beach your raft!**
- Sweeper rafts will provide help out on the racecourse. Contact the Race Committee if you need assistance.

Connecticut River State Wildlife Area

Wilcox Island

Brownstone Quarry

Portland Riverside Marina



# FINISH

Race Course ≈ 3.6 Nautical Miles

